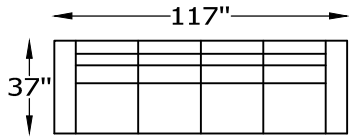
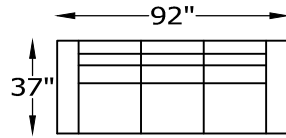


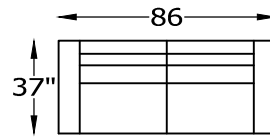
1364 GEO SERIES



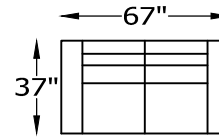
136499 LARGE SOFA



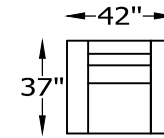
136420 SOFA
136446 SOFA SLEEPER



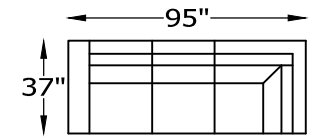
136451 CONDO SOFA
136468 CONDO SOFA SLEEPER



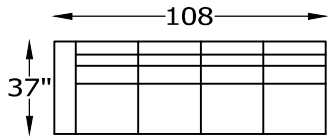
136413 LOVESEAT



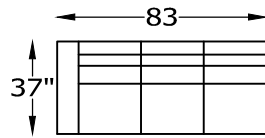
136404 CHAIR
136404SW SWIVEL CHAIR



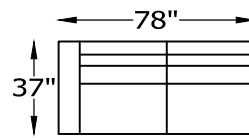
136418L or R ONE ARM SOFA WITH RETURN
SHOWN AS A LEFT



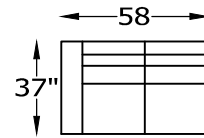
136498L or R LARGE SOFA ONE ARM
SHOWN AS A LEFT



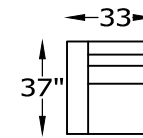
136417L or R SOFA ONE ARM
136445L or R SOFA ONE ARM SLEEPER
SHOWN AS A LEFT



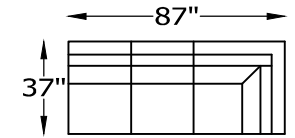
136450L or R CONDO SOFA ONE ARM
136466L or R CONDO SOFA ONE ARM SLEEPER
SHOWN AS A LEFT



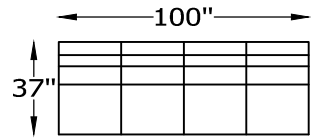
136410L or R LOVESEAT ONE ARM
SHOWN AS A LEFT



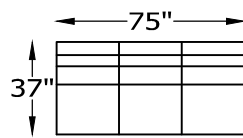
136403L or R CHAIR ONE ARM
SHOWN AS A LEFT



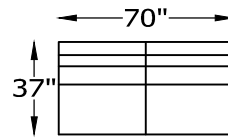
136415L or R ARMLESS SOFA
WITH RETURN
SHOWN AS A RIGHT



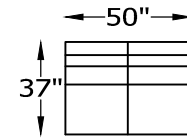
136497 ARMLESS LARGE SOFA



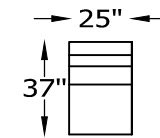
136414 ARMLESS SOFA
136444 ARMLESS SOFA SLEEPER



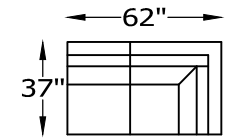
136449 ARMLESS CONDO SOFA
136467 ARMLESS CONDO SOFA SLEEPER



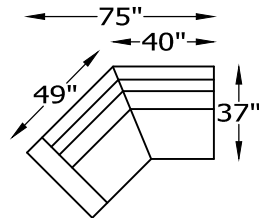
136409 ARMLESS LOVESEAT



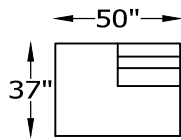
136402 ARMLESS CHAIR



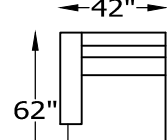
136474L or R ARMLESS LOVESEAT
WITH RETURN
SHOWN AS A RIGHT



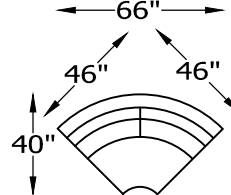
136461L or R ANGLE SOFA ONE ARM
SHOWN AS A LEFT



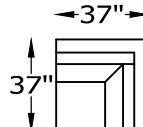
136464L or R ARMLESS LOVESEAT
WITH BUMPER
SHOWN AS A LEFT



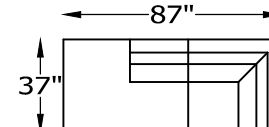
136407L or R CHAISE ONE ARM
SHOWN AS A LEFT



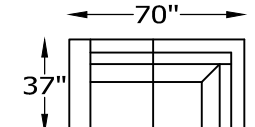
136423 WEDGE



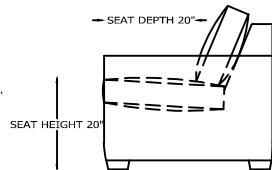
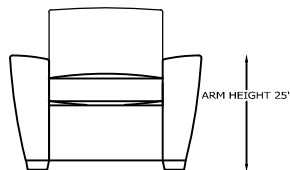
136405 CORNER



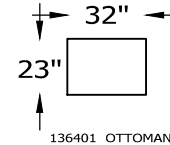
136452L or R ARMLESS LOVESEAT
BUMPER WITH RETURN
SHOWN AS A LEFT BUMPER



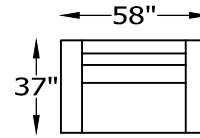
136411L or R ONE ARM LOVESEAT WITH
RETURN
SHOWN AS A LEFT



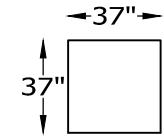
*NOT SCALE



136401 OTTOMAN

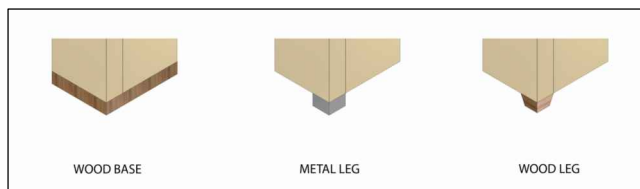


136486 CHAIR-1/2
136458 CHAIR-1/2 TWIN SLEEPER



136448 SQUARE OTTOMAN
136463 STORAGE OTTOMAN

CHOOSE LEG STYLE



Scale: $\frac{5}{32}'' = 1'-0''$

This schematic is current as 10/15 . The company reserves the right to change dimensions and products offered. A more recent schematic may be available for this series. To see the most current schematic, go to <http://lazarind.com>

*NOTE: L or R IS DETERMINED BY FACING AT THE PIECE